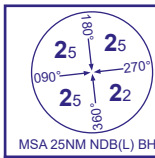
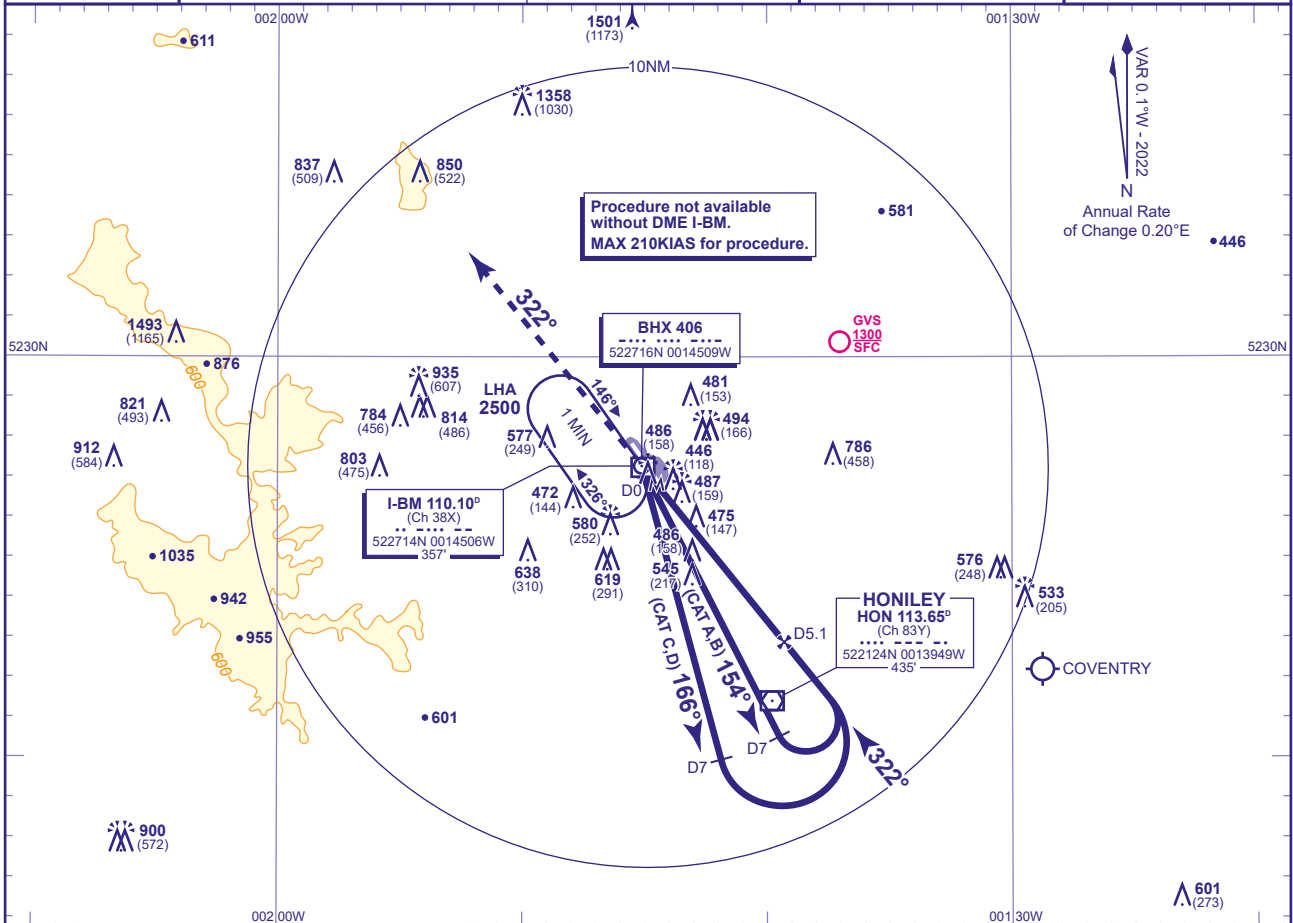


INSTRUMENT APPROACH CHART - ICAO

BIRMINGHAM
NDB(L)/DME
RWY 33
(ACFT CAT A,B,C,D)

APP	123.980 (131.005 DIRECTOR)	BIRMINGHAM RADAR *	AD ELEVATION	339
TWR	118.305	BIRMINGHAM TOWER	THR ELEVATION	328
	121.805	BIRMINGHAM GROUND	OBSTACLE ELEVATION	1501 AMSL (1173) (ABOVE THR)
ATIS	136.030	BIRMINGHAM INFORMATION		
* See Note 2			BEARINGS ARE MAGNETIC	

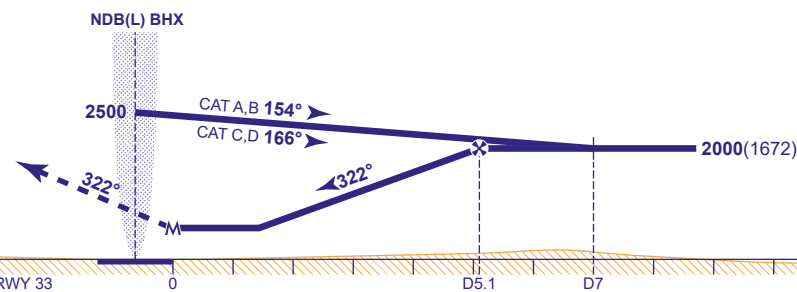
TRANSITION ALTITUDE
6000

RECOMMENDED PROFILE Gradient 5.2%, 320FT/NM

DME I-BM	5	4	3	2
ALT(HGT)	1970(1642)	1660(1332)	1340(1012)	1020(692)

MAPt I-BM DME ZERO (THR RWY 33)

Climb straight ahead to 3000, then as directed by ATC.



Aircraft Category		A	B	C	D	Rate of descent	G/S KT	160	140	120	100	80
OCA (OCH)	Procedure	800(472)	800(472)	800(472)	800(472)		FT/MIN	850	740	640	530	420
VM(C)OCA (OCH AAL)	Total Area	810(471)	920(581)	1080(741)	1310(971)							

NOTE 1 FAT offset 3° from RWY C/L and intercepts RWY C/L 1.4NM before THR.

2 In the event of a radar failure, BIRMINGHAM APPROACH callsign should be used on 123.980 or 131.005.

CHANGE (12/22): DME I-BM ELEVATION.